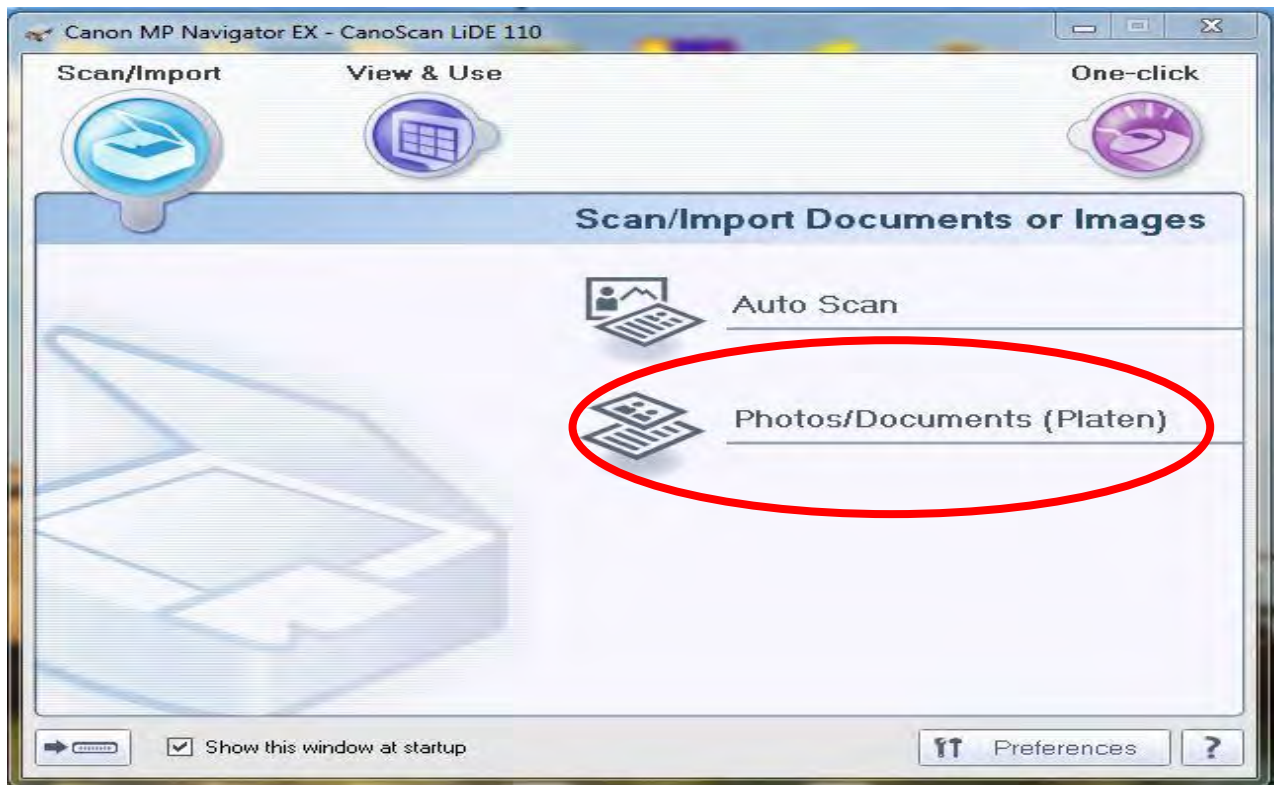
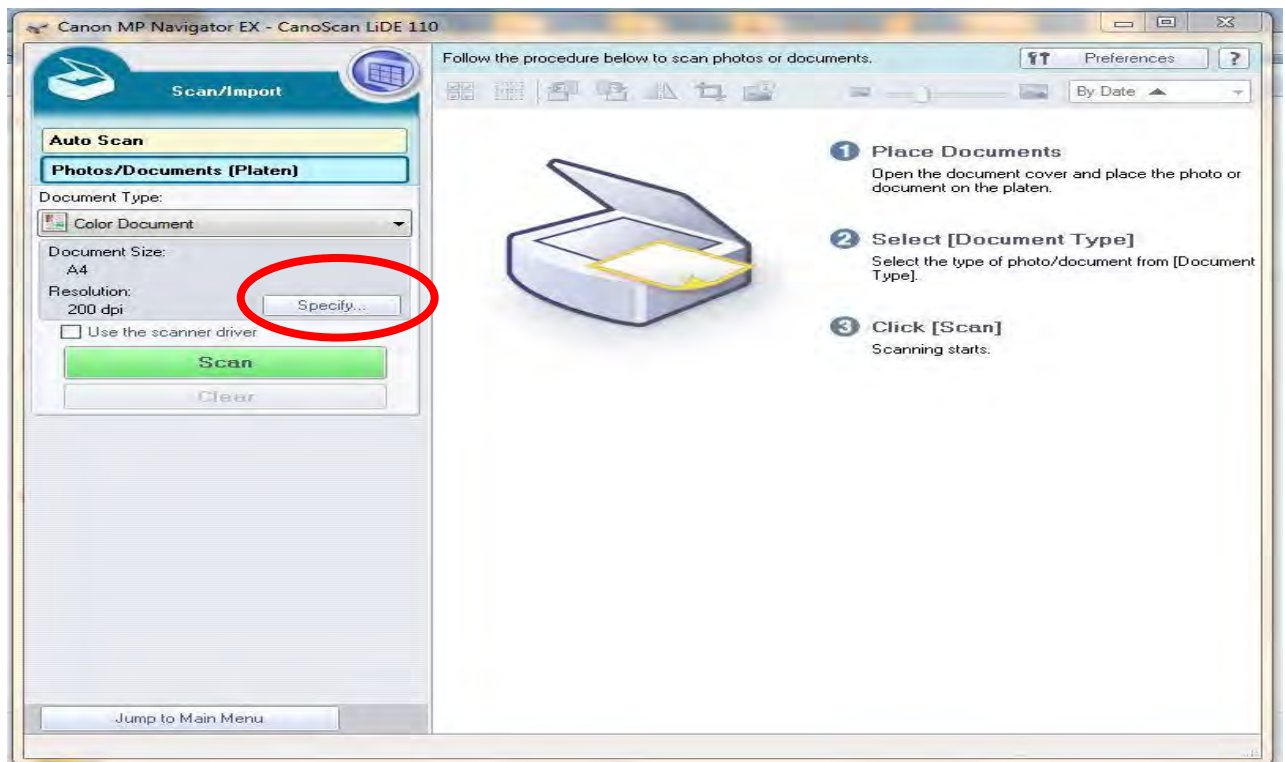


STEPS FOR HOW TO SCAN PDF FILES USING CANNON LIDE 110 SCANNER

STEP 1 : Click on Short cut icon of **Canon Mp Navigator Ex- CanoScan LiDE 110** on desktop or you will find it in All Program Files->Canon Utilites->MP Navigator Ex 4.0->MP Navigator Ex 4.0. Then below screen will display.

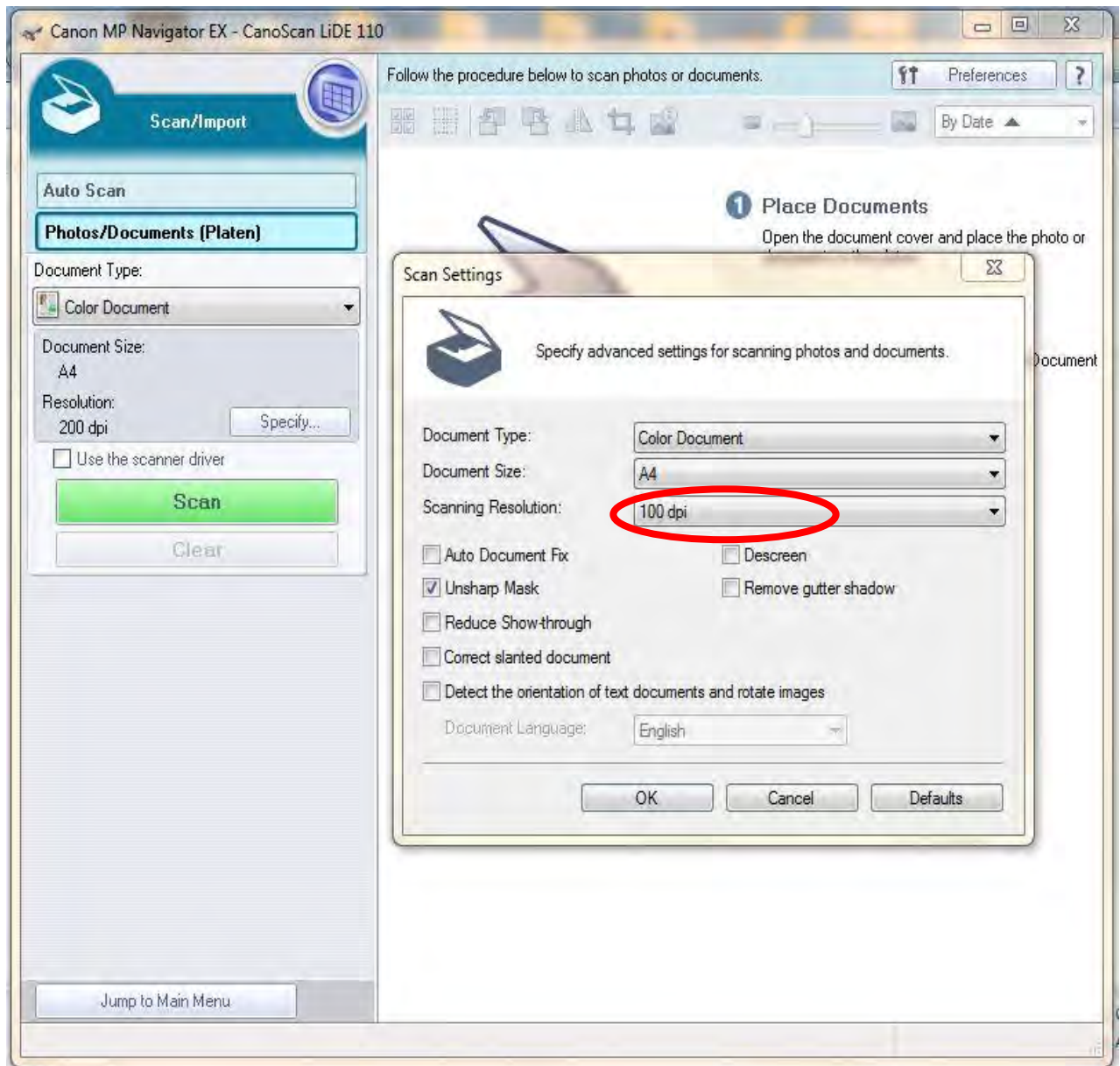


STEP 2: Click on Photos/Documents (Platen) ,below screen will display



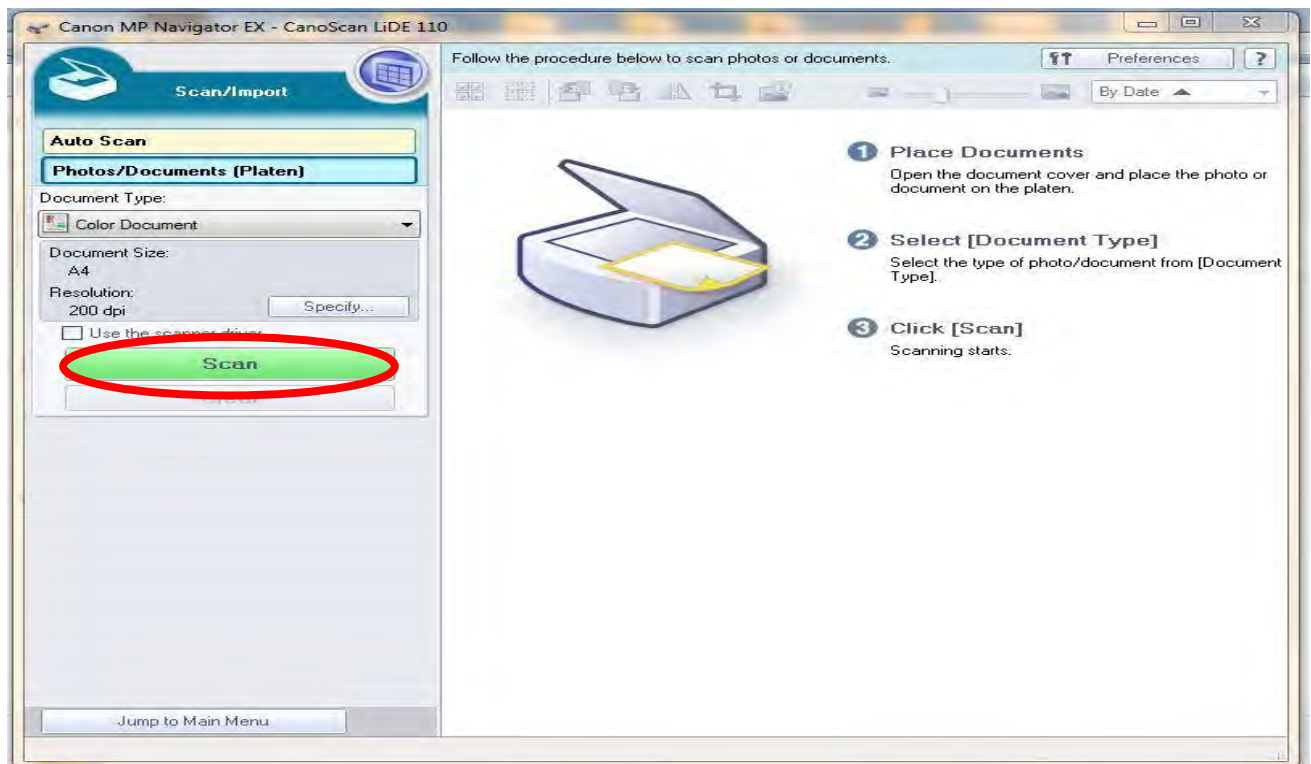
STEP 3: Click on **Specify** below screen will display here you can change the document type, Document Size and Scanning Resolution.

Note: By default Scanning Resolution will be 200dpi set it as **100dpi** to reduce the file size. (Lesser size will be good for uploading to software or sending through mail)

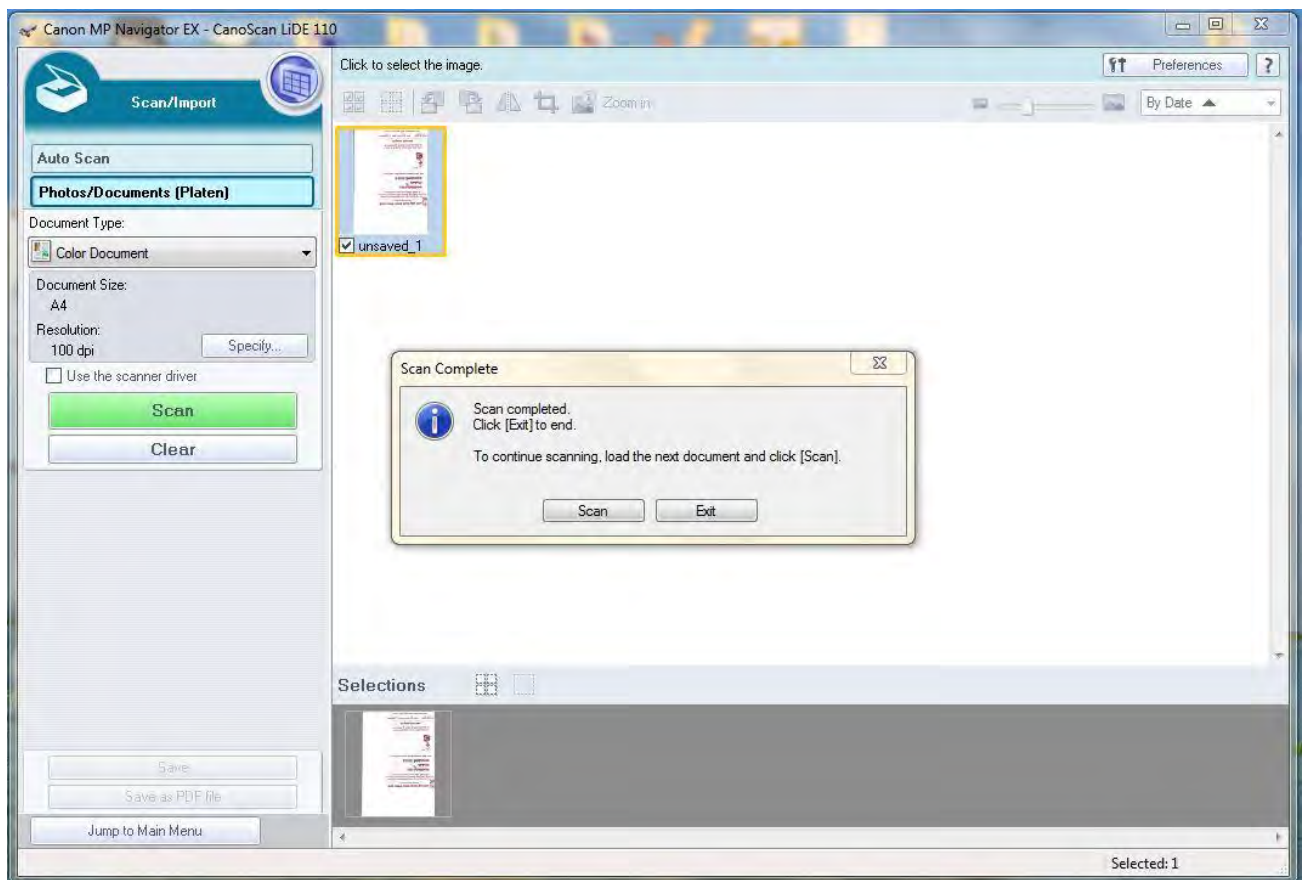


If you click on **Scanning Resolution** you can set Resolution.

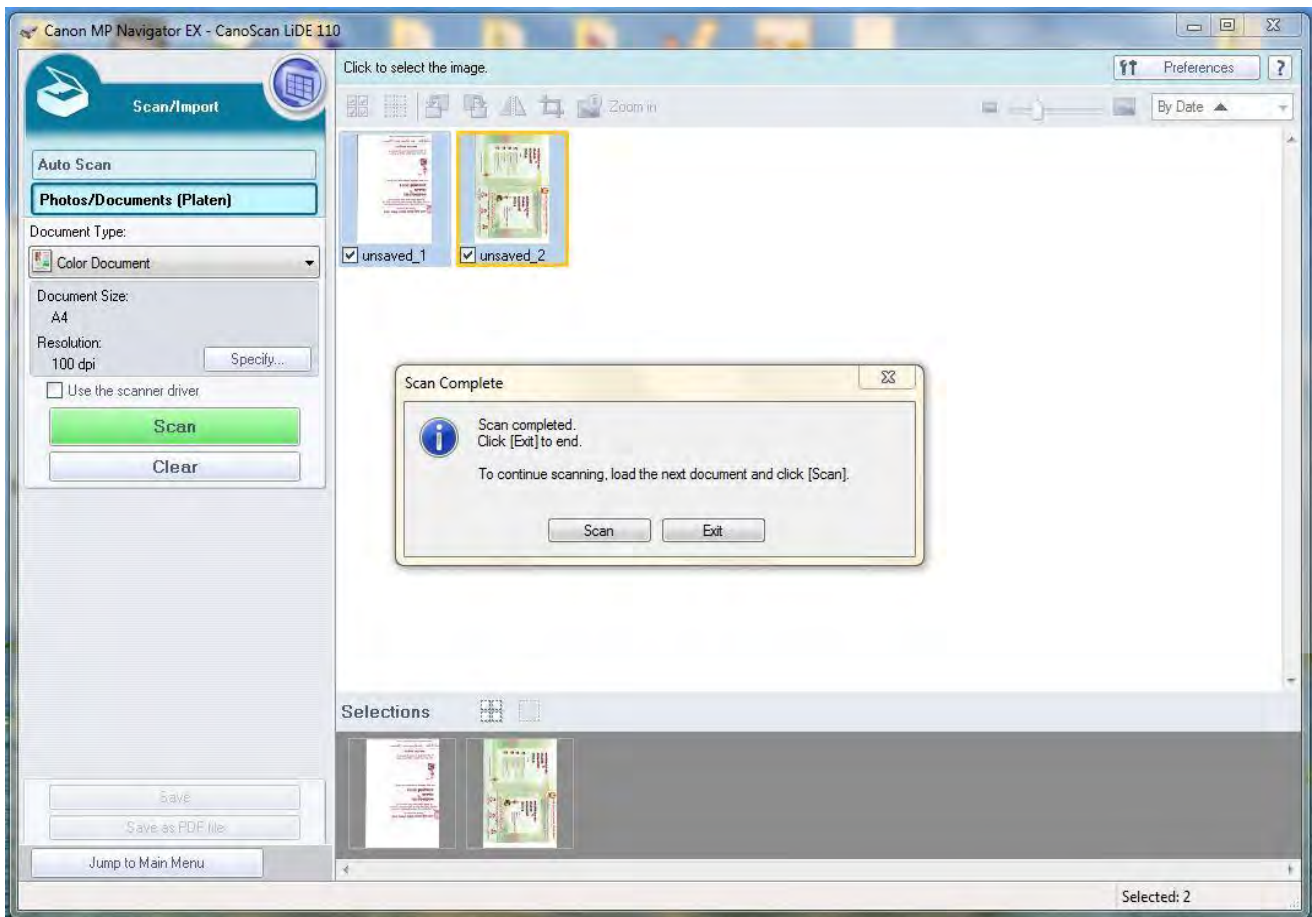
STEP 4: Click on OK below screen will display, here click on **SCAN** for further process.



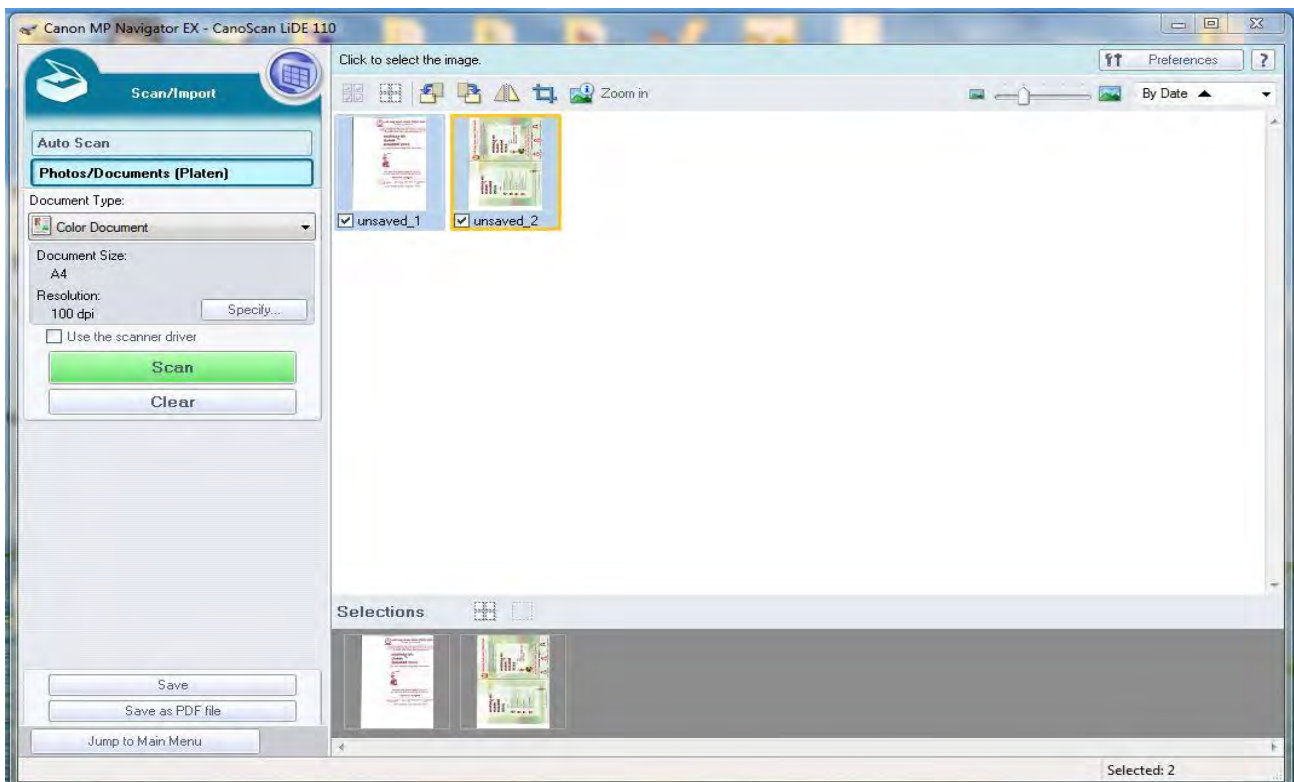
STEP 5: After SCANNING below screen will display. Here if you have more than one PDF file to scan change the PDF file which you have given before and **place another document to scan** and then click on SCAN else click on EXIT.



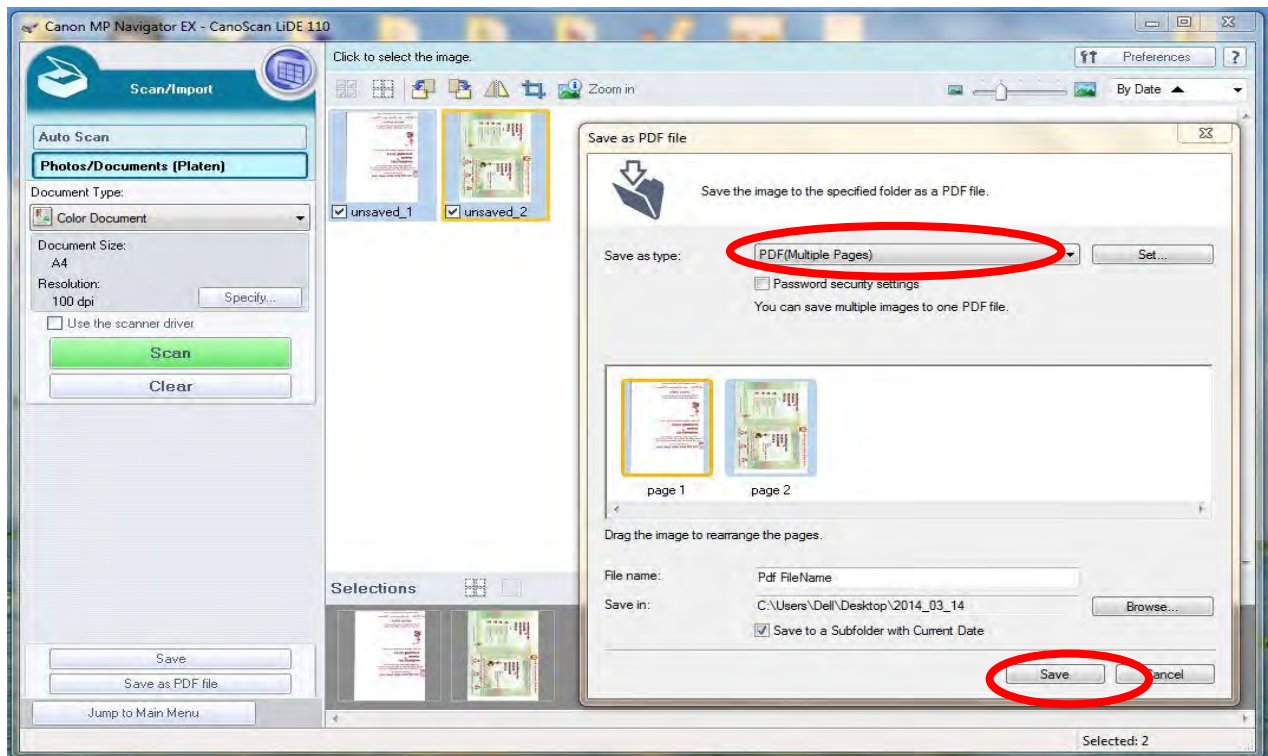
If you again click on **SCAN** below screen will display.



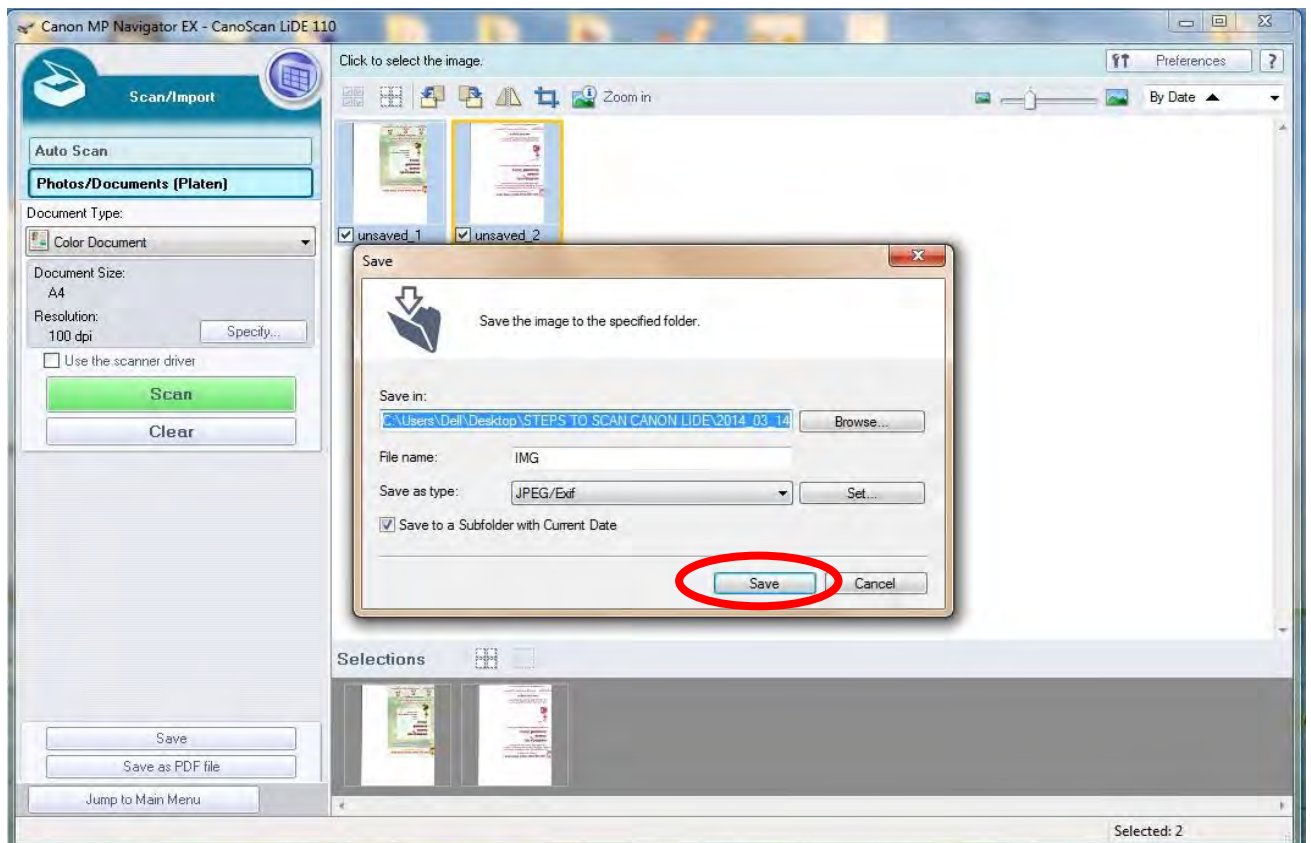
If you again click on **EXIT** below screen will display. Here Click on **SAVE AS PDF FILE** to save scanned documents to PDF files as Shown in STEP 6. Click on **SAVE** to save scanned documents to JPGE or to any image format as shown in STEP 6.



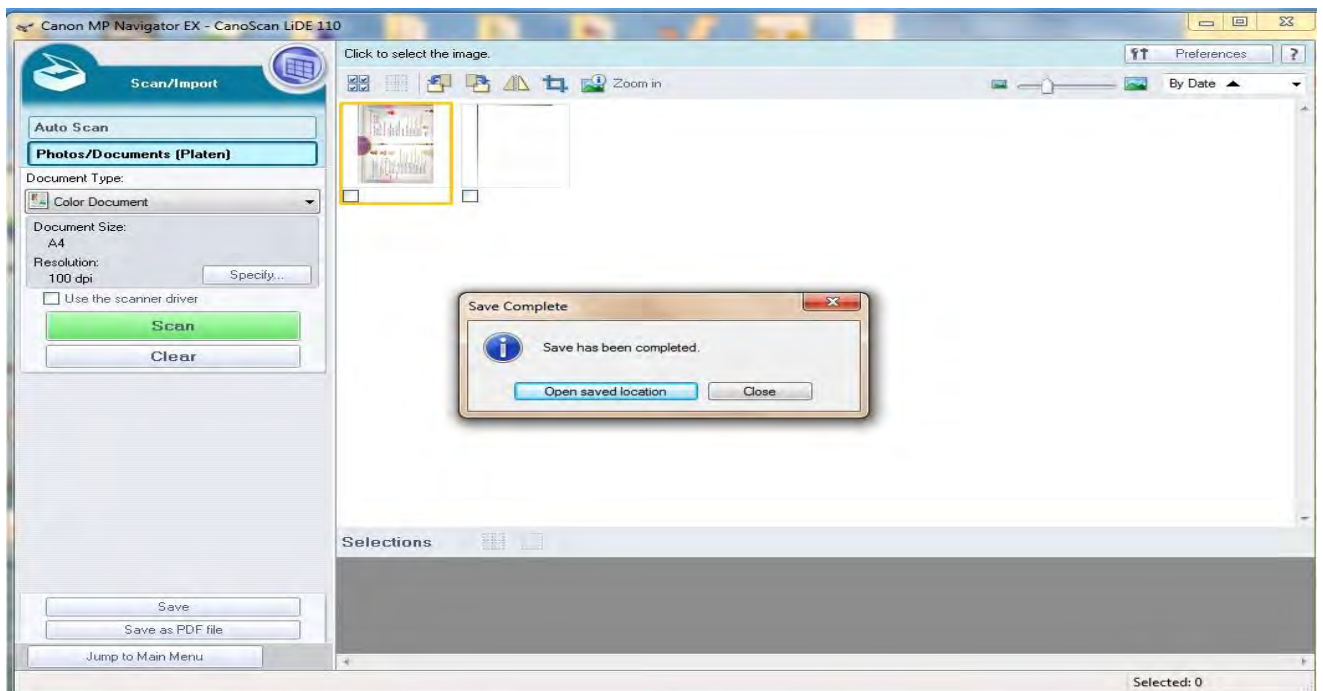
STEP 6: TO SAVE SCANNED DOCUMENTS TO PDF FILES: Click on **Save as PDF File** below screen will display. Here if you have more than 1 PDF file dynamically it will show PDF (Multiple Pages).



STEP 6: TO SAVE SCANNED DOCUMENTS TO JPG OR ANY IMAGE FILE: Click on **Save** below screen will display. Here give File Name and click on Browse and save the file.



STEP 7: Click on **Save**, below screen will display and give message as shown in below fig.



STEP 8: If you click On **Open saved location** below screen will display the path dynamically as shown.

